



PK-5158

5.8 GHz Parabolic Antenna

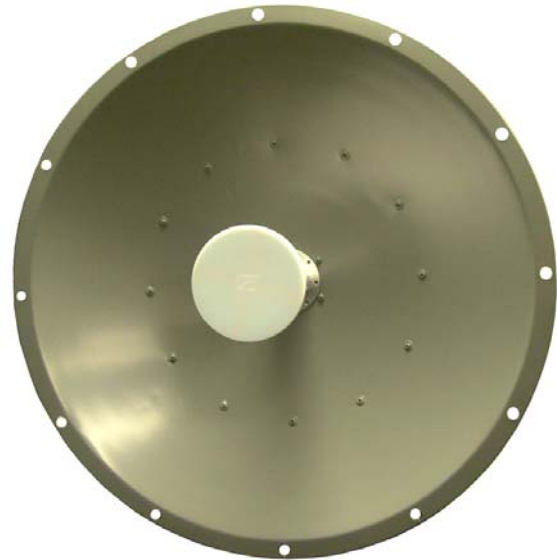
29 dBi

Superior Performance

The Hyper Gain 5.8GHz High-Performance Parabolic Dish Wi-Fi Antennas is a high performance broadband dual polarized solid dish antenna designed to operate from 5.1 GHz to 5.8 GHz (5150-5850 MHz). The wide band design of this antenna eliminates the need to purchase different antennas for each frequency. This simplifies installations since the same antenna can be used for a wide array of wireless applications. This antenna features 29 dBi of gain with a 5° beam-width.

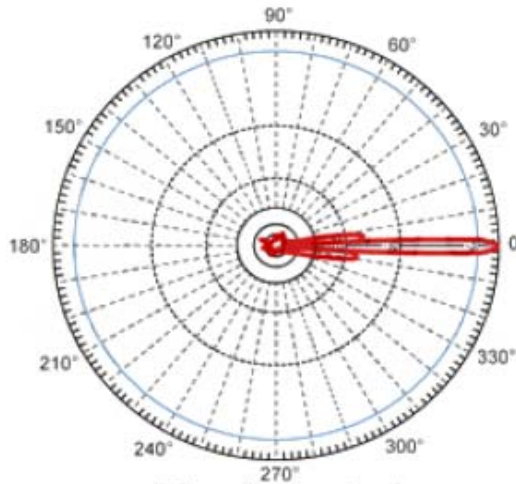
Rugged and Weatherproof

The reflector dish of these antennas are constructed from high quality aluminum which gives them superior strength. The dish is coated in a light gray UV-inhibited polymer for durability and aesthetics. The small diameter of the dish helps minimize wind loading.

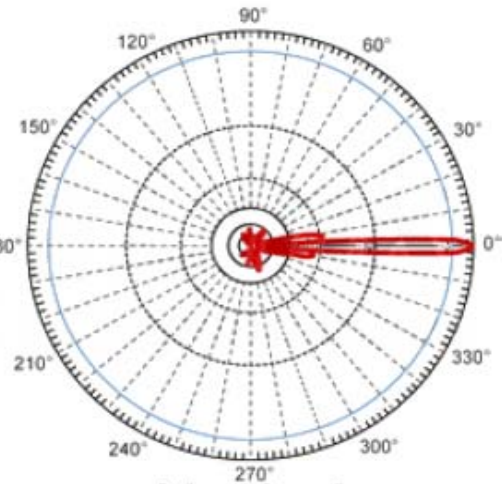


Electrical and Mechanical Specifications

Electrical and Mechanical Specifications	
Frequency	5150 - 5850 MHz
Gain	29 dBi
Polarization	Horizontal or Vertical
Horizontal Beam Width	5 degrees
Vertical Beam Width	5 degrees
Connector	N Female
VSWR	< 1.5:1 avg.
Front to Back Ratio	35 dB
Impedance	50 Ohm
Max. Input Power	100 Watts
Weight	12.1 lbs. (3.0 kg)
Dimensions	23.6" (436.8 mm)
Mounting	1.5" (38mm) – 3" (76mm) dia. masts
Lighting Protection	DC Short
Operating Temperature	-40° C to to 85° C (-40° F to 185° F)



Horizontal



Vertical