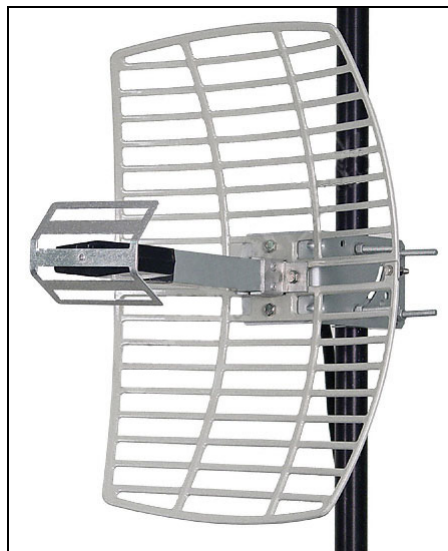




# PG-24L 2.4 GHz Mini-Reflector LAN Antenna 15 dBi

The PG-24L Directional Mini-Reflector Grid WiFi Antenna provides 15 dBi gain with a 16° horizontal beam-width for directional applications. Its compact design makes it nearly invisible in most installations, and it can be installed for either vertical or horizontal polarization.

The PG-24L antenna is supplied with a 60 degree tilt and swivel mast mount kit. This allows installation at various degrees of incline for easy alignment. It can be adjusted up or down from 0° to 60°.



## Electrical and Mechanical Specifications

Electrical and Mechanical Specifications	
Frequency	2400-2500 MHz
Gain	15 dBi
Horizontal Beam Width	15 degrees
Vertical Beam Width	21 degrees
Front to Back Ratio	20 dB
Polarization	Horizontal or Vertical
Impedance	50 Ohm
Max. Input Power	100 Watts
VSWR	< 1.5:1 avg.
Weight	3 lbs. (1.4 kg)
Grid Dimensions	11.8" (300 mm) x 15.7" (400 mm)
Mounting	2 in. (50.8 mm) diameter mast max.
Elevation Angle	0 to +15°
Operating Temperature	-40° C to to 85° C(-40° F to 185° F)
Wind Loading	100 MPH / 10.0 lb. 120 MPH / 15.6 lb.

# RF Antenna Gain Patterns

