

# TV LINEAR AMPLIFIERS

## TV LINEAR AMPLIFIER 500 mW IN CLASS A



Model: AMP 05W-TV

This is a high quality Professional UHF TV linear amplifier in **A class**. It is broadband for all UHF TV band from 470 MHz- 860 MHz. This amplifier works in pure A class and needs only 10 mW RF power for 500 mW output. Power supply DC voltage is 20 V /1 A. Extremely linear this amplifier has been made for a small TV stations and studios. It is ideal as an exciter for a high power TV stages. Everything is assembled and tested! Warranty one year includes all components except output transistors! A highest quality PC board is double sided and silver-plated. This amplifier must be installed on a heat sink (not included). Size: 4" X 2".

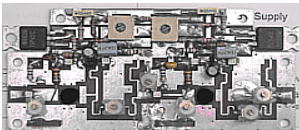
## TV LINEAR AMPLIFIER 35 W IN CLASS A



Model: AMP 35W-TV

This is a highest quality Professional UHF TV linear amplifier in **A class**. It is broadband for all UHF TV band from 470 MHz- 860 MHz. The best of its kind... This amplifier needs 5 W RF power for the full 35 W output/50 ohms. Power supply is DC voltage 28 V /7 A. Extremely linear this amplifier has been made for a small TV stations and studios. It is ideal as an exciter for a high power TV stages. This amplifier comes assembled and tested! Power transistors are SD 1490 X 2 made by SGS Thompson. Warranty one year includes all components except output transistors! This amplifier has built-in VSWR protection circuit. A highest quality PC board is double sided and silver-plated. This amplifier must be installed on a heat sink (not included). Size: 4"X2".

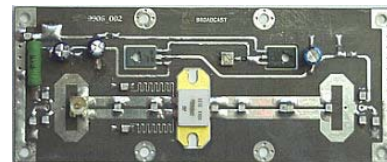
## TV LINEAR AMPLIFIER 2 W IN CLASS A



Model: AMP 2W-TV

This is another high quality Professional UHF TV linear amplifier in **A class**. It is broadband for all UHF TV band from 470 MHz- 860 MHz. The best of its kind... This amplifier works in A class and needs only 10mW RF power for the full 2 W output. Power supply DC voltage is 28 V /3 A. Extremely linear this amplifier has been made for a small TV stations and studios. It is ideal as an exciter for a high power TV stages. Warranty one year includes all components except output transistors! A highest quality PC board is double sided and silver-plated. This amplifier must be installed on a heat sink (not included). Size: 4" X 2".

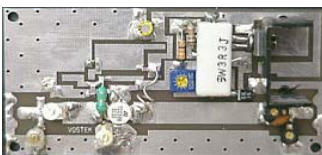
## NEW MODEL: AMP 35WX-TV



This is a highest quality Professional UHF TV linear amplifier in **A class**. It is broadband for all UHF TV band from 470 MHz- 860 MHz. This amplifier needs 4 W RF power for the maximum RF power 35 W /50 ohms. Power supply is DC voltage 28 V /6.5 A. Extremely linear this amplifier has been made for a small TV stations and studios. It is ideal as an exciter for a high power TV stages. This amplifier comes assembled and tested! Power transistors are made by SGS Thompson Warranty one year includes all components except output transistors! This amplifier is using SGS bipolar transistor SD 1490. A highest quality PC board is double sided and silver-plated. This amplifier must be installed on a heat sink (not included). Board size is: 5" X 2".

**NEW!** **NEW!**

## TV UHF LINEAR AMPLIFIER 5W



Model: AMP 5W-TV

This is a highest quality Professional UHF TV linear amplifier in **A class**, broadband from 470 MHz- 860 MHz. This amplifier needs 1.1 W RF power for 5 W output. Power supply requires DC voltage 26 V /1.2 A. Extremely linear this amplifier has been made for a small TV stations and studios. It is ideal as an exciter for a high power TV stages. Warranty one year includes all components except output transistors! A highest quality PC board is double sided and silver-plated. This amplifier must be installed on a heat sink (not included). Board size is: 4" X 2".