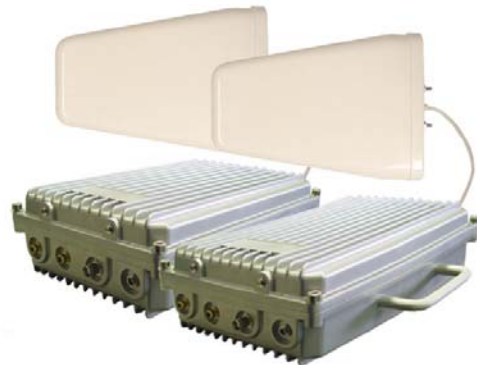




XLS- 1800/H 8 CHANNELS MICROWAVE LINK FOR 1.8 GHz

Recommended for Government agencies

5 W transmitter with 8 channel receiver, 2 special antennas 9 dB gain LOG4/GR, Capacity: 1 video/2 audio channels. Operating frequency: synthesized. This link is Professional and it is recommended for **special applications or video surveillance** . It is made for long distances - up to 15 km line-of-sight. Frequency setting is internal.



Technical Specifications	XLS-1800/H Transmitter
Operating Frequency	1800 MHz
Channels	8 channels
Channel Selection	DIP- Switches
DC Voltage	12 V
RF output power	5 W
Minimum required voltage	12 V
Battery Power	12.6 V
Frequency stability	0.005%
Video distortion	1%
Maximum Range	App. 10 miles
Video format	NSCT, PAL
Current Consumption	2 A
Antenna	Directional
Impedance	50 ohms
Video connector	BNC
Video level	1 V
Video impedance	75 ohms
Audio frequency response	20 Hz – 20 kHz
Audio input	300 mV
Audio carrier frequency	6 MHz
Temperature Range	-40+75 °C
Dimensions	7.5" x 11" x 3.5"
Weight	6 lb
Modulation	WFM

Technical Specifications		XLS-1800/H Receiver
Operating Frequency	1800 MHz	
Channels	8	
Channel Selection	DIP- Switches	
DC Voltage	12 V	
Sensitivity	-86 dBm	
Minimum required voltage	12 V	
Battery Power	12.6 V	
IF frequency	480 MHz	
Video distortion	2%	
IF bandwidth	18 MHz	
Gain flatness	0.6 dB	
Noise	< 2 dB	
Antenna	Directional	
Impedance	50 ohms	
Video connector	BNC	
Video level	1 V	
Video impedance	75 ohms	
Image rejection	N/A	
Audio input	300 mV	
Audio output	300 mV	
Temperature Range	-40 + 75 °C	
Dimensions	7.5" x 11" x 3.5"	
Weight	6 lb	
Modulation	WFM	
Antenna connector	SMA	

Powerup

At powerup, the unit will retrieve the last used channel, program the PLL with this channel, and display the channel by blinking the LED the same number as the channel number.

Displaying Current Channel

Push button is located on the top of the unit. To display the current channel, press the pushbutton once and release. The current channel will blink. After approx. 5 seconds, the current channel will again blink.

Changing to a New Channel

To change to a new channel, press the pushbutton once and release. The current channel will blink. Press and release the pushbutton again **before** 5 seconds has elapsed and the channel will increment by 1 and the LED will blink the new channel. Repeat this step until the desired channel is reached, waiting for the blinking to stop each time before pressing the button again. **Once your desired channel is reached, wait 5 seconds until the LED again blinks your desired channel. Your new channel is now saved in memory.**

Warning

Our microwave links are built in weatherproof boxes, but they are not waterproof. Please make sure to protect transmitter/receiver boxes from the rain and moisture.