

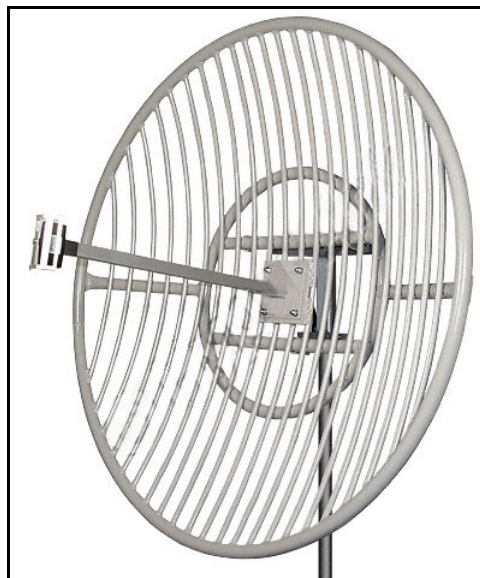


PH-24L

2.4 GHz High Performance LAN Antenna 30 dBi

Special parabolic antenna provides 30 dBi gain with a 5.3° beam-width for highly directional long range applications. Additional applications include wireless network, point to multi-point and video surveillance in the 2.4 GHz ISM band. External interference of this antenna is minimized due to the excellent front to back ratio. This antenna comes with a 18" coax lead terminated with an N female type connector.

This antenna's construction features a welded steel reflector grid for superior strength. The grid surface is UV powder coated for durability and aesthetics, and the open-frame design minimizes wind loading.



Electrical and Mechanical Specifications	
Frequency	2400-2500 MHz
Gain	30 dBi
Horizontal Beam Width	5.3 degrees
Vertical Beam Width	5.3 degrees
Impedance	50 Ohm
Max. Input Power	100 Watts
Front to Back Ratio	> 30 dB
VSWR	< 1.5:1 avg.
Weight	35 lbs. (16 kg)
Dimensions	59" Dia. (1.5 m)
Mounting	1.5" (38mm) to 3" (76mm) dia. mast
Grid Material	Galvanized Steel
Operating Temperature	-40° C to 85° C (-40° F to 185° F)
Polarization	Vertical
Wind Survival	134 MPH

RF Antenna Gain Patterns

