

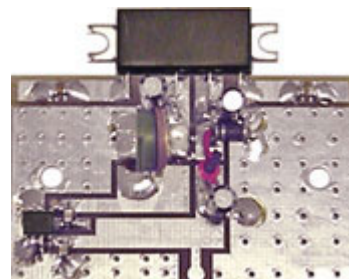


---

# AMP-2W VHF TV VHF LINEAR AMPLIFIER 2 W IN CLASS A

---

This is a highest quality Professional VHF TV linear amplifier module broadband from 175 MHz- 225 MHz. This amplifier needs only 3 mW RF power for 2 W output. Power supply requires DC voltage 8 V /1.5 A. Extremely linear this amplifier has been made for small TV stations and studios. It is ideal as an exciter for high power TV stages. Amplifier comes assembled and tested. Warranty one year is included. A highest quality PC board is double sided and silver plated. This amplifier must be installed on a heat sink (not included). Board size is: 2 "X 1.5 ".



Technical Specifications	
FREQUENCY RANGE:	175 MHz – 225 MHz
IMPEDANCE:	50 ohm IN/OUT
RF INPUT	3 mW, MAX 12 mW
GAIN	26 dB/200 MHz
DC POWER:	7.5 V / 1.8 A
INTERMODULATION DISTORTION:	-50 dBc
POWER OUTPUT:	2 W
CURRENT CONSUMPTION:	1890 mA
CLASS A OPERATION	POWER INPUT FOR 2 W OUT- 3 mW
MIN POWER INPUT	3 mW