

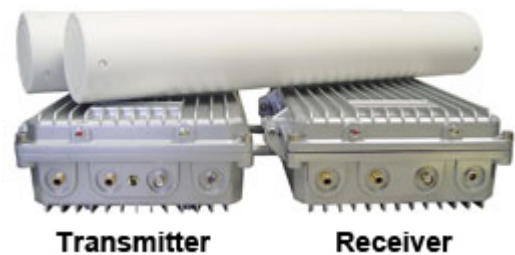
# XLSD-2400, XLSD-2400/H DIGITAL LICENSE FREE MICROWAVE LINK FOR 2.4 GHz WITH HD/SDI INPUTS

# 2.4 GHz

**1 W / 5 W** transmitter with digital display to access any frequency from 2400 MHz - 2481 MHz, special receiver, 2 directional antennas (LOG1/GR ), Capacity: 1 video/2 audio channels, receiver has built-in low noise amplifier for excellent sensitivity. Operating frequency: synthesized. This link is Professional and it is recommended for **TV production and Film**. It is made for very long distances - up to 15 km line-of-sight (5 W unit). Both receiver and transmitter are built in weatherproof enclosures.

## FEATURES:

- Composite Video input
- HD, SDI video input
- Security ID coded communication ensures privacy.
- Digital wireless technology avoids interference.
- License free operation.
- Simple and quick installations.



Technical Specifications	XLSD-2400/H Transmitter
Operating Frequency	2400 MHz-2481 MHz
Channels	FHSS mode up to 60 channels
Channel Selection	Internal / depend on model
Long range	3-10 miles
Video inputs:	Composite Video, HD, SDI
Video Modulation/Demodulation Type	BPSK, QPSK, 16-QAM
DC Voltage	12 V
RF Bandwidth	3Mbps
RF output power	1 W (5 W)
Minimum required voltage	12 V
Battery Power	12 V- 14.4 V
Video distortion	2%
Video format	PAL, NTSC
Current Consumption	1,600 mA Max
Antenna	SMA/ N
Antenna Gain	14 dBi
Antenna Impedance	50 ohm
Impedance	50 ohms
Video connector (Composite video)	RCA
Video connector SDI, HD	BNC
Video level	1 V

Video impedance	75 ohms
Audio frequency response	20 Hz-20 kHz
Audio input	300 mV
Audio carrier frequency	6 MHz
Temperature Range	-10 °C + 50 °C
Dimensions	7.5" x 11" x 3.5"
Weight	10 lb

Technical Specifications	XLSD-2400/H Receiver	
Operating Frequency	2400 MHz-2483 MHz	
Channels	FHSS mode up to 80 channels	
Channel Selection	Display	
DC Voltage	9-12 V	
Sensitivity	- 80 dBm	
Minimum required voltage	12 V	
Battery Power	12 V- 14.4 V	
Video distortion	2%	
Gain flatness	0.3 dB	
Noise	<2 dB	
Antenna	Directional	
Output Image Resolution	720 * 480 (D1)	720 * 576
Output Frame Rate	30 fps	25 fps
Impedance	50 ohms	
Video connector	RCA female	
Video level	1 V	
Video impedance	75 ohms	
Image rejection	75 ohms	
Audio input	300 mV	
Audio output	300 mV	
Temperature Range	-40 + 75 °C	
Dimensions	7.5" x 11" x 3.5"	
Weight	10 lb	
Modulation	WFM	
Antenna connector	SMA/N	

### Warning

Our microwave links are built in weatherproof boxes, but they are not waterproof. Please make sure to protect transmitter/receiver boxes from the rain and moisture.