



---

# PK-4961

## 4.9 GHz- 6.0 GHz

### Parabolic Antenna

### 28 dBi

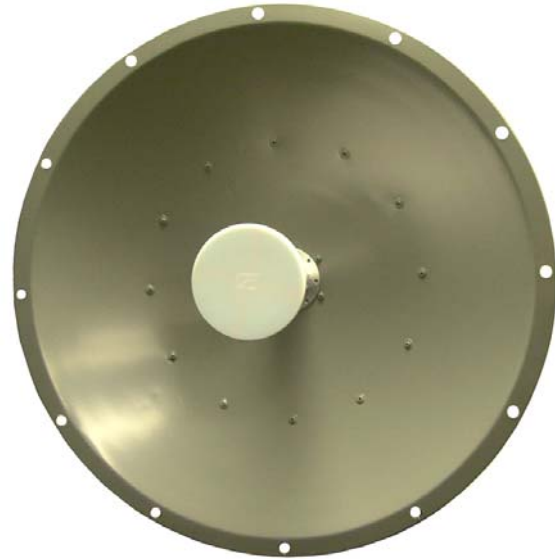
---

#### Superior Performance

The Hyper Gain , High-Performance Parabolic Dish Wi-Fi Antennas is a high performance broadband dual polarized solid dish antenna designed to operate from 4.9 GHz to 6.1 GHz. The wide band design of this antenna eliminates the need to purchase different antennas for each frequency. This simplifies installations since the same antenna can be used for a wide array of wireless applications. This antenna features 28 dBi of gain with a 5° beam-width.

#### Rugged and Weatherproof

The reflector dish of these antennas are constructed from high quality aluminum which gives them superior strength. The dish is coated in a light gray UV-inhibited polymer for durability and aesthetics. The small diameter of the dish helps minimize wind loading.



Electrical and Mechanical Specifications	
Frequency	4925 - 6100 MHz
Gain	28 dBi
Polarization	Horizontal or Vertical
Horizontal Beam Width	5 degrees
Vertical Beam Width	5 degrees
Connector	N Female
VSWR	< 1.5:1 avg.
Front to Back Ratio	35 dB
Impedance	50 Ohm
Max. Input Power	100 Watts
Weight	12.1 lbs. (3.0 kg)
Dimensions	23.6" (436.8 mm)
Mounting	1.5" (38mm) – 3" (76mm)dia. masts
Lighting Protection	DC Short
Operating Temperature	-40° C to to 85° C(-40° F to 185° F)

# RF Antenna Gain Patterns

