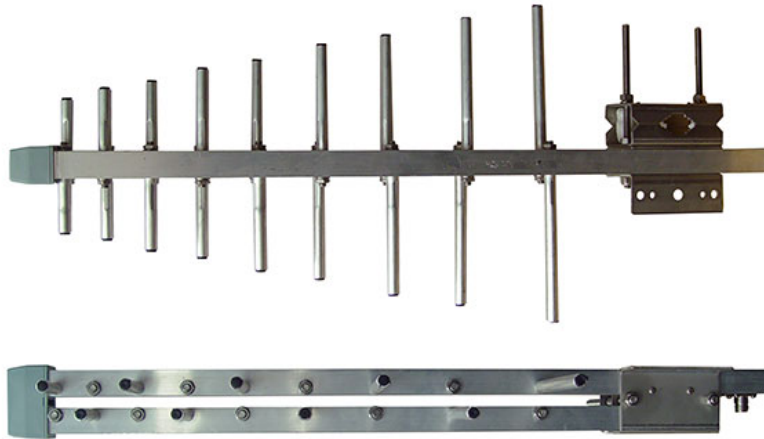
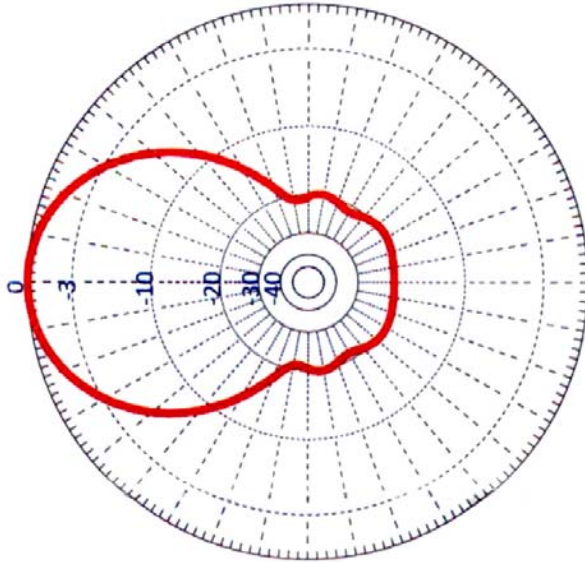




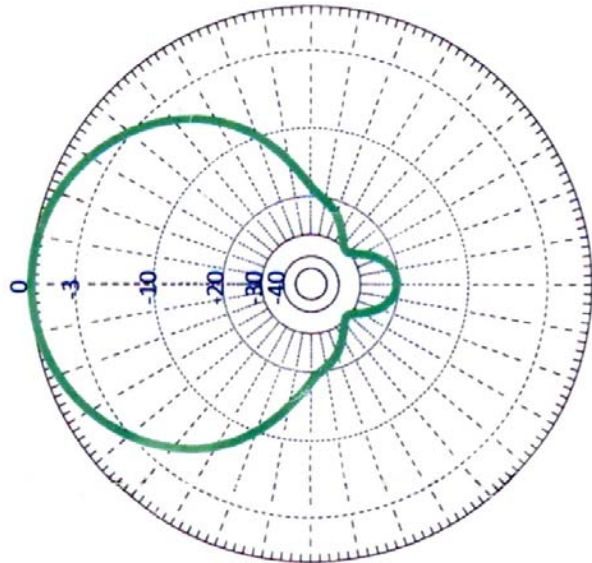
# LOG-4786/200 UHF HIGH GAIN ANTENNA FOR TV APPLICATIONS



Technical Specifications	
Operating Frequency:	470-860 MHz
Forward Gain:	8 dBd
Number of Elements:	18
F/B Ratio:	24 dB
Impedance:	50 ohms
E Plane Beam width:	60 degrees
H plane Beamwidth:	83 degrees
Connector Type:	N type
1.5:1 VSWR Bandwidth typical:	8 MHz
Polarisation:	Horizontal or Vertical
Wind area:	0.23 ft
Weight Assembled:	5.5 lb
Hardware	Aluminum
Detention:	25 mm X 25 mm X 2 mm



Horizontal Polarisation Pattern



Vertical Polarisation Pattern



**Horizontally Polarized Antenna**