

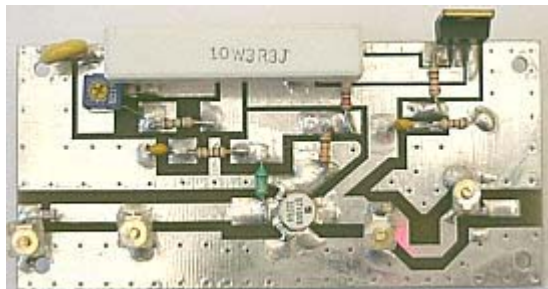


AMP-5WDTV

HIGH POWER TV AMPLIFIER

5 W

This is our TV UHF amplifier 5 W RF power built-in a high quality box. It is fully broadband for all UHF TV channels from 470 MHz- 860 MHz. This amplifier needs 1 W RF power for the full 5 W output/50 ohms. Power supply is DC voltage 28 V /1.5A. Extremely linear this amplifier has been made for small TV stations and studios. It is ideal as an exciter for a high power TV stages. This amplifier comes assembled and tested.



Technical Specifications	
FREQUENCY RANGE:	470 MHz – 860 MHz
IMPEDANCE:	50 ohm IN/OUT
RF INPUT	MIN POWER 0.8 W, MAX-1.2 W
GAIN	9 dB/470 MHz
DC POWER:	26 V
INTERMODULATION DISTORTION:	-49 dBc
POWER OUTPUT:	5 W
CURRENT CONSUMPTION:	890 mA
INPUT/OUTPUT CONNECTORS:	
POWER PLUG:	STANDARD 2.1 mm