

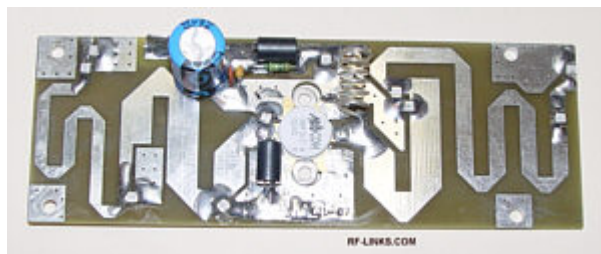


---

# AMP-100FM POWER AMPLIFIER MODULE BOARD 120 W

---

This is a complete tested professional 120 W module - pc board easy to use with minimum driving 10 W RF input for the maximum 120 W RF power output. It is broadband in 88 MHz- 108 MHz and doesn't require any tuning or adjusting. Available with schematic diagram and parts list.



Technical Specifications	
Operating Frequencies:	88 MHz-108 MHz
Operating class:	C
DC Voltage:	28 V
RF power:	120 W max.
Input power:	10 W, min power for 100 W out 6 W
Minimum required voltage:	26 V
Impedance:	50 ohms
Current Consumption:	6.9 A
Temperature Range:	-10 + 75 *C
Dimensions:	5.5" x1.8"